

DH-SF1016L

16-port Unmanaged Desktop Switch



- 16 × RJ-45 10/100 Mbps ports.
- Wide operating temperature ranging from -10°C to $+55^{\circ}\text{C}$.
- Easy to install, and is plug and play.
- Supports wall mount and desktop mount.



Plug & Play



Optimized Performance



Easy Installation



Robust Design

Series Overview

The Device is a layer-2 commercial switch. It has a high-performance switching engine and a large buffer memory to ensure smooth video stream transmission. With a plastic and fanless design, the device provides a more cost-effective option for customers. The Device is an unmanaged switch, so it does not need to be configured through web interface, which simplifies installation.

Functions

Plug and Play

Hassle-free, it does not require any configuration. Simply use after it is powered on.

Optimized Performance

All ports can transmit streams at high speeds without delay.

Easy Installation

Both desktop and wall mount installation are supported, making it suitable for a wide variety of scenarios.

Robust Design

Built to last, the architecture of the switch makes it highly reliable, operating with high-efficiency non-stop.

Scene

Suitable for network of small and medium-sized offices and stores.

Technical Specification

Basic

Switching Capacity	3.2 Gbps
Packet Forwarding Rate	2.38 Mpps
Description of Function Slots	Port 1-16: 16 × RJ-45 10/100 Mbps
Management Type	No
Operating Temperature	-10 °C to +55 °C (+14 °F to +131 °F)
Operating Humidity	10%–90% (RH), non-condensing
Power Consumption	Idling: 0.7 W; Full load: 1.5 W
Power Supply	12 VDC, 0.5 A
Statics Protection	Air discharge: 8 kV; Contact discharge: 6 kV
Lightning Protection	Common mode: 4 kV; Differential mode: 0.5 kV
Net Weight	0.3 kg (0.66 lb)
Product Dimensions	160 mm × 120 mm × 42 mm (6.30" × 4.72" × 1.65")(L × W × H)

Hardware

Included Power Adapter	Yes
Ethernet Port	16
Ethernet Port Speed	10/100 Mbps
Storage Temperature	-40 °C to +60 °C (-40 °F to +140 °F)
Storage Humidity	10%–90% (RH), non-condensing
Protection	IP30

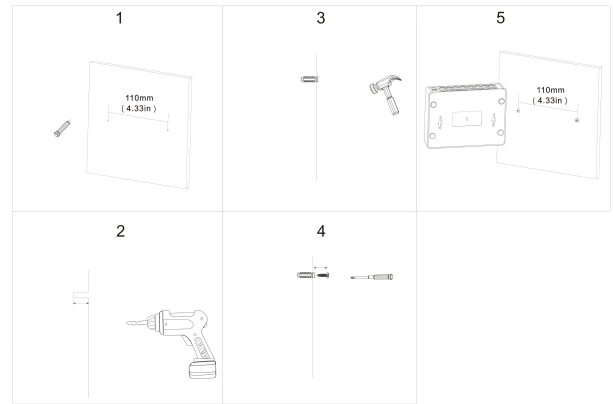
Performance

Jumbo Frame	1520 Byte
MAC Table Size	8K
Communication Standard	IEEE 802.3; IEEE 802.3u; IEEE 802.3X

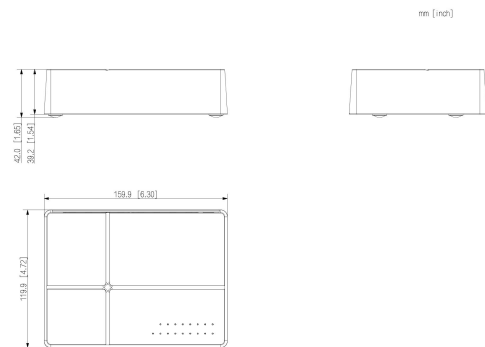
General

Gross Weight	0.6 kg (1.32 lb)
Packaging Dimensions	207 mm × 180 mm × 92 mm (8.14" × 7.08" × 3.62")(L×W×H)
Installation	Desktop mount; wall mount
Certifications	CE
Packing List	1 × User Manual; 1 × Legal and Regulatory Information; 1 × Power Adapter

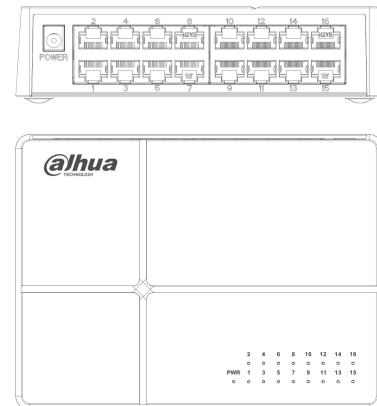
Installation



Dimensions (mm[inch])



Panels



Ordering Information

Type	Model	Description
Ethernet Switch	DH-SF1016L	16-port Unmanaged Desktop Switch