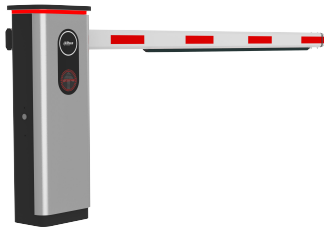


DHI-IPMECD-2062-R

Telescopic Straight Arm Barrier



Series Overview

The Barrier was expertly developed with a springless design and integrated LED Display that shows access information. It is also highly flexible as it intelligently adapts to the various lengths of barrier arms. The direction can be effortlessly switched between left and right, and it can be seamlessly configured on the app through Bluetooth. In the event of a power failure, the barrier arm can be manually lifted, ensuring seamless passage at entrances and exits. Engineered with a professional appearance, it is ideal for use at the entrances and exits of parking lots, hotels, schools, residential areas, and businesses.

Functions

High Quality

The anti-corrosive case is made of cold-rolled plate and underwent the metal stamping process, making it strong and highly durable. It is strong enough to resist impacts of different strengths and is resistant to deformation. It is IP54 rated, making it suitable for use outdoors in different weather types.

Brushless DC Motor

Equipped with an integrated DC brushless motor, it is highly stable, quiet and has a long lifespan.

Secure and Reliable

As it is powered by 24 VDC low voltage, it is both secure and stable.

Multi-dimensional Anti-smashing

It supports anti-smash through external radar and loop. The arms are also designed with elastic anti-smashing rubber strips at the bottom, and automatically rise when vehicles approach and fall when vehicles depart.

- The arm is not included in the barrier gate controller.
- The springless barrier features a telescopic straight arm on the right, allowing for customized settings for both left and right operation, with quick switching between the two directions (Right by default).
- 24 VDC brushless motor that is quiet, highly secure, low power consumption, stable and efficient.
- 3 m–6 m (9.84 ft–19.69 ft) telescopic straight arm that can be adjusted according to its rising speed. It opens and closes in just 1.4-6 sec.
- Automatically rises when the barrier arm makes contact with an object.
- Automatically rises during a power failure.
- The speed and position at which the barrier rises and falls is adjustable.
- Supports remote control at a maximum distance of 50 m (164 ft) in open space.
- Supports external radar, loop, and the IR anti-smashing function. It also has a built-in 12 VDC output for powering the external radar.
- The camera can be connected via the RS-485 port, and the barrier status, including the number of operations, operating status, operation log can be read on the camera's web interface.
- Operating temperature: -40°C to $+70^{\circ}\text{C}$ (-40°F to $+158^{\circ}\text{F}$).
- Operating voltage: 100–264 VAC.
- Motor can withstand 6 million uses.

Scene

Suitable for use in entrances and exits of parking lots, hotels, schools, residential areas, office and government buildings and more.

Technical Specification

Basic	
Arm Type	Straight Arm Barrier; Telescopic Arm Barrier
Arm Length	Straight arm: 2.7 m–6 m (8.86 ft–19.69 ft)
Arm Model	IPMECD-0262-M30-LED IPMECD-0262-M40-LED IPMECD-0262-M50-LED IPMECD-0262-M60-LED IPMECD-0262-M2745, 2.7 m–4.5 m (8.86 ft–14.76 ft) adjustable IPMECD-0262-M4560, 4.5 m–6 m (14.76 ft– 19.69 ft) adjustable
Opening/Closing Time	1.4 sec–6 sec (speed is measured by the arm length and weight)
Motor Type	DC brushless
Rotational Speed	1500 RPM
Transmission Ratio	88:1
Bluetooth Standard	GFSK, π/4-DQPSK
Bluetooth Frequency Range	NA2.402 GHz–2.480 GHz ISM band
Bluetooth Power Transmission	–15.7 dBm to +6.4 dBm
Sub 1G Modulation Type	ASK
Sub 1G Frequency Range	433.82 MHz–434.02 MHz
Sub 1G Power Transmission	433.82 MHz–434.02 MHz@–10 dBm
Port	
RS-485	1
I/O	1
Status Output	2 channels. One channel is fully open and the other channel is fully closed.
Function	
Anti-drop	Supports loop, IR and radar anti-smashing function.
Auto Opening in Power Failure	Yes
Auto Lifting against Obstruction	Yes
Count Mode	Yes
Hand Crank Control in Power Failure	Yes
Limit Description	The position at which the barrier rises and falls is adjustable.
RS-485 Log	Access operation log information through the RS-485 port, the information includes the number of opening barrier, the type of opening barrier, error code and more
Remote Control	Supports remote control at a maximum distance of 50 m (164 ft) in open space.
Number of Pairable Remote Controllers	Includes 2 remote controls, and supports up to 40

Left and Right Interchangeable	Yes
Power Output	12 V ± 5% (Max: 1 A)

General	
Power Supply	100–264 VAC
Power Consumption	< 432 W
Motor Lifespan	6 million times
Operating Temperature	–40 °C to +70 °C (–40 °F to +158 °F)
Storage Temperature	–40 °C to +70 °C (–40 °F to +158 °F)
Operating Humidity	10%–90% (RH), non-condensing
Storage Humidity	10%–90% (RH), non-condensing
Protection	IP54
Anti-corrosion Level	Basic Protection
Product Dimensions	340.0 mm × 260.0 mm × 978.0 mm (13.39" × 10.24" × 38.50") (L × W × H)
Packaging Dimensions	1,058.0 mm × 375.0 mm × 425.0 mm (41.77" × 14.76" × 16.73") (L × W × H)
Net Weight	37.6 kg (82.92 lb)
Gross Weight	43.2 kg (95.52 lb)
Installation	Bottom-mounted with expansion bolts

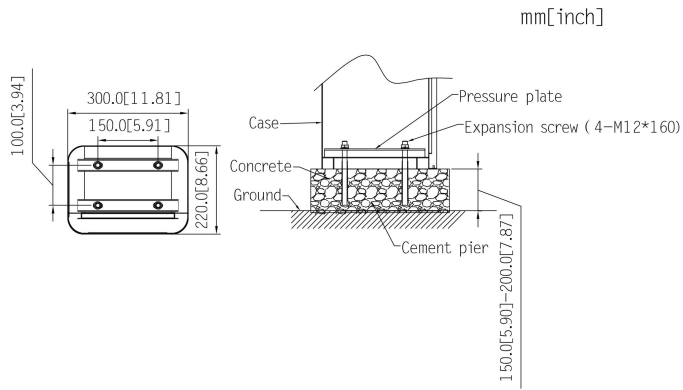
Ordering Information

Type	Model	Description
Barrier	DHI-IPMECD-2062-R	Telescopic Straight Arm Barrier

Accessories

Optional:





Dimensions (mm[inch])

